

Western Canada Retail Advisors Notable Transactions

Q4 2018

Daniel Lee*, Principal
604.757.5102
daniel.lee@avisonyoung.com
**Daniel J. Lee Personal Real Estate Corporation*

Jason Schouten*, Principal
604.757.5103
jason.schouten@avisonyoung.com
**Jason Schouten Personal Real Estate Corporation*

Mike Hodge, Vice-President
604.757.5104
mike.hodge@avisonyoung.com

James Shandro, Vice-President
604.647.5073
james.shandro@avisonyoung.com

Connor Eden, Vice-President
604.757.5105
connor.eden@avisonyoung.com

Jeron Dillon, Senior Associate
604.647.1330
jeron.dillon@avisonyoung.com

British Columbia Transactions



1,043 sq. ft.

Represented the Tenant

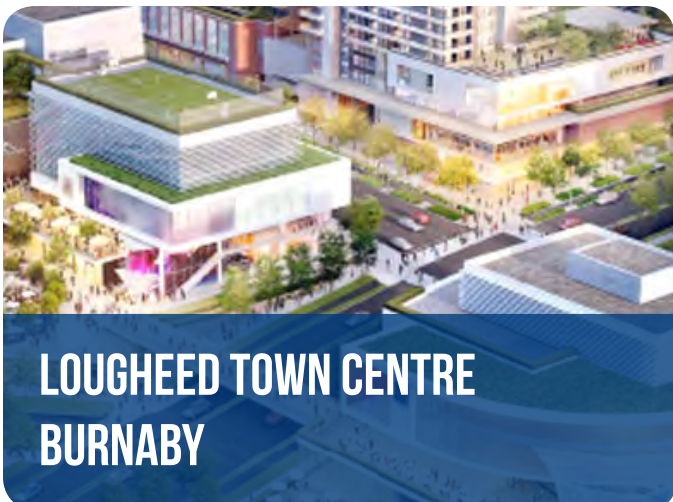
End cap unit located in close proximity to the Commercial-Broadway SkyTrain station



748 sq. ft.

Represented the Tenant

Inline unit located in the popular family neighbourhood of Edgemont Village



416 sq. ft.

Represented the Tenant

Unit in the re-developed Lougheed Town Centre food court



4,917 sq. ft.

Represented the Tenant & Landlord

Inline unit adjacent to Tim Hortons in new mixed-use development in close proximity to Langara College



2,524 sq. ft.

Represented the Sublandlord

Subleased space adjacent to Tim Hortons on Vancouver's Medical Mile



824 sq. ft.

Represented the Tenant

Ground floor unit in a mixed-use retail/office building located at No. 3 Road and Westminster Highway

Alberta Transactions



854 sq. ft.

Represented the Tenant

Inline unit facing Wye Road in the London Drugs & Safeway anchored Village Market



1,130 sq. ft.

Represented the Tenant

Inline unit in the Superstore shadow anchored and TD Bank anchored Creekside Centre



2,900 sq. ft.

Represented the Tenant

High profile end cap unit with Macleod Trail exposure in new mixed-use development



1,500 sq. ft.

Represented the Tenant

Inline unit in new pad building, located along Highway 2A at Wetaskiwin Mall

Manitoba & Saskatchewan Transactions



**AURORA
REGINA**



2,800 sq. ft.

Represented the Tenant

End cap drive-thru unit in new Costco anchored Aurora Shopping Centre



**ST. VITAL SQUARE
WINNIPEG**



3,150 sq. ft.

Represented the Tenant

Inline unit located in Pier 1 Imports, Mark's, Shoppers Drug Mart & Liquor Mart anchored St. Vital Square



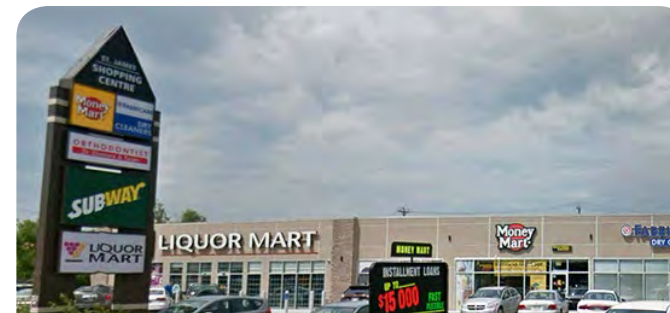
**UNIVERSITY HEIGHTS SQUARE
SASKATOON**



1,420 sq. ft.

Represented the Tenant

King of Donair's first store in the Saskatoon market; located in mature University Heights trade area



**ST. JAMES SHOPPING CENTRE
WINNIPEG**



1,962 sq. ft.

Represented the Tenant

High exposure inline unit located in Shoppers Drug Mart & Liquor Mart anchored St. James Shopping Centre



**715 - 9TH STREET WEST
MEADOWLAKE**



2,600 sq. ft.

Represented the Tenant

Free standing drive-thru in new hotel anchored development

Meet Our Team

Western Canada Retail Advisors



DANIEL LEE*
Principal
*Daniel J. Lee Personal Real Estate Corporation



JASON SCHOUTEN*
Principal
*Jason Schouten Personal Real Estate Corporation



MIKE HODGE
Vice-President



JAMES SHANDRO
Vice-President



CONNOR EDEN
Vice-President



JERON DILLON
Senior Associate



TERESA PHAM
Associate



MEAGAN BARLEY
Sales Assistant



SETEREH ARIANA
Retail Coordinator

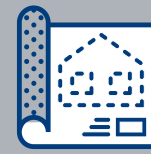
Our Expertise



TENANT
REPRESENTATION



LANDLORD
REPRESENTATION



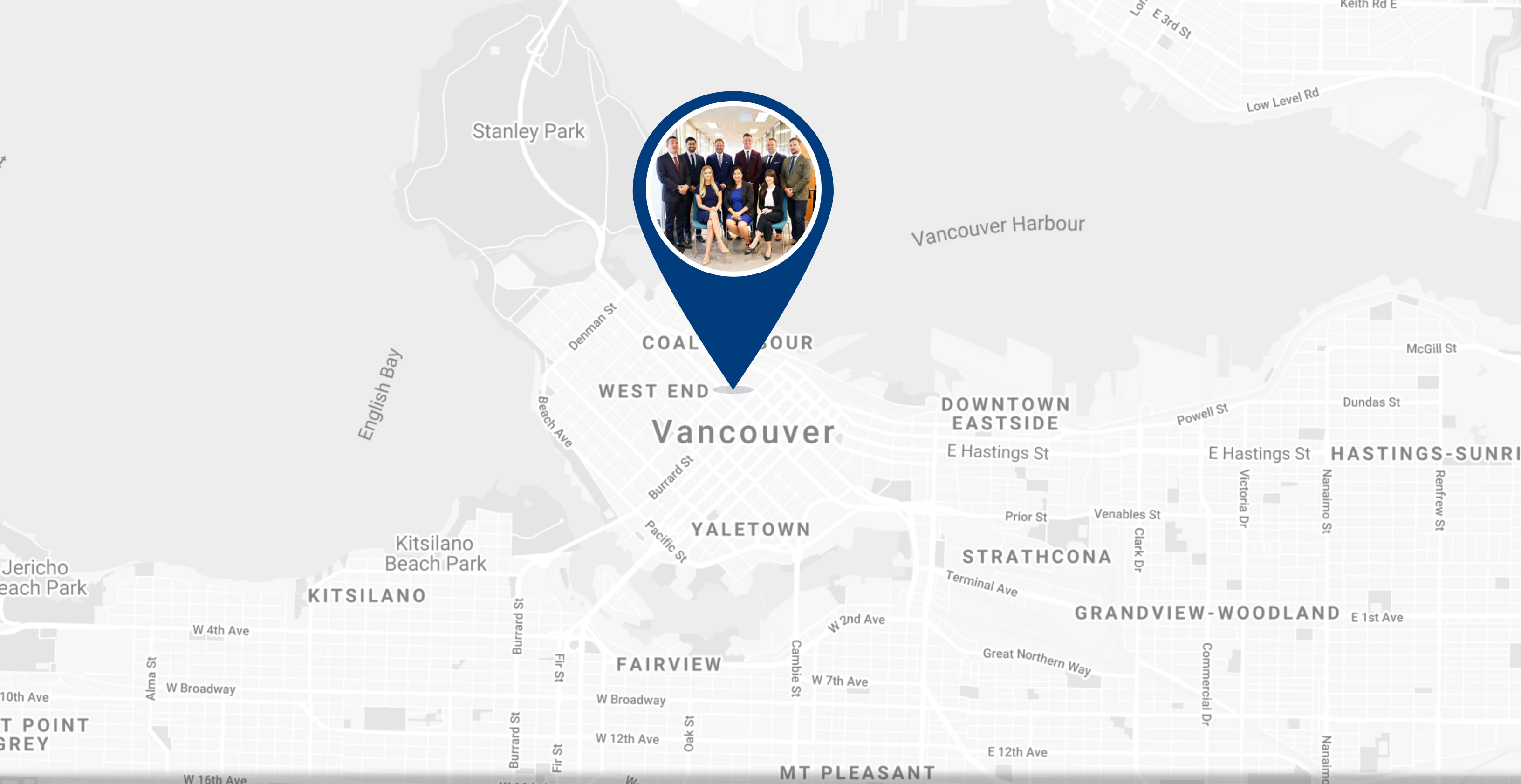
LAND ASSEMBLY
REPRESENTATION



INVESTMENT
SALES



DEVELOPMENT
CONSULTATIONS



avisonyoung.com

©2019 Avison Young. All rights reserved.

E. & O.E.: The information contained herein was obtained from sources which we deem reliable and, while thought to be correct, is not guaranteed by Avison Young Commercial Real Estate (B.C.) Inc.



Platinum
member