

Report highlights

► **Just sold**

7,3117 sf | Office
177 Rebecca Street
Hamilton
[View property website](#)

► **Just sold**

10,696 sf | Industrial
585 Hanlon Creek Boulevard
Guelph
[View property website](#)

Industrial



925,951 sf in Niagara
[453 Concession Road 5](#)

Industrial



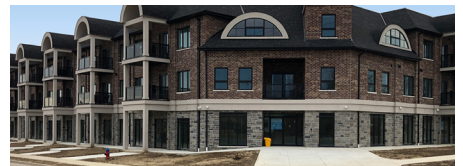
36,000 sf in Woodstock
[401 Griffin Way](#)

Office



Portfolio across Ontario
[Get more information](#)

Office



Up to 1,305 sf in Binbrook
[2605 Binbrook Road](#)

Retail



4,300 sf in Cambridge
[33 Main Street](#)

Retail



3,750 sf in London
[2300 Wharncliffe Road S](#)

Retail



2,471 sf in Stratford
[269 Erie Street](#)

Land



+/- 14.22 acres in Milverton
[54 Mill Street](#)

Available properties for sale in Southwestern Ontario

Land



10 acres in London

[848 Gideon Drive](#)

Land



4.69 acres in London

[1505 Crumlin Side Road](#)

Retail



2.335 acres in Guelph

[40 - 50 Cowan Place](#)

Land



1.28 acres in Binbrook

[2520 Highway 56](#)

Land



1 acre in Kitchener

[115 Benton Street](#)

Land



0.952 acres in Waterloo

[609 King Street N](#)

Land



0.35 acres in Binbrook

[2450 Regional Road 56](#)

Land



0.257 acres in Sauble Beach

[639 Bannister Drive](#)

Read our reports

Avison Young Southwestern Ontario For Lease Report

[Download report](#)

Avison Young's 10 trends for a zero carbon world

[Download report](#)

Avison Young's The X factor

[Download report](#)

[View all global market reports](#)

[View all Canadian market reports](#)

Visit our website

avisonyoung.ca

Avison Young

Commercial Real Estate Services, LP, Brokerage
231 Shearson Crescent, Suite 210 Cambridge ON N1T 1J5

Office +1 226 366 9090 **Fax** +1 866 541 9755



Platinum member